

[From Wermuth, 1953.]

### CONDITIONS FOR KEEPING CROCODILES

#### General

These conditions will apply to all crocodiles held in captivity, with the exception of crocodiles being reared for skin production or to crocodiles being held for scientific research. They will be applicable to crocodiles held by crocodile farms for display purposes.

#### Numbers and Size

The number of crocodiles which may be held in a pen at any one time will depend on their length. The categories given below show the number of crocodiles that may be held in each size group.

CATEGORY	SIZE	NUMBER
"A"	Under one metre in length	16
"B"	From one metre but under two metres	8
"C"	From two metres but under three metres	4
"D"	Three metres and over	2

Notwithstanding the abovementioned categories no crocodiles under three metres in length will be held in the same pen if the difference in length between such crocodiles is more than half a metre.

#### Pens

The pen may be constructed in any shape but will not be less than 100 square metres in area and no two sides may be less than four metres apart.

The walls of the pen will be constructed of brick or other suitable material and shall not be less than one metre in height, and the inner face will be smooth plastered. Where such pen is for public display, any wall accessible to the public will be topped by a fence of not less than 60 cms in height, having parallel strands not more

than 10 cms apart and down strands or droppers not more than 50 cms apart.

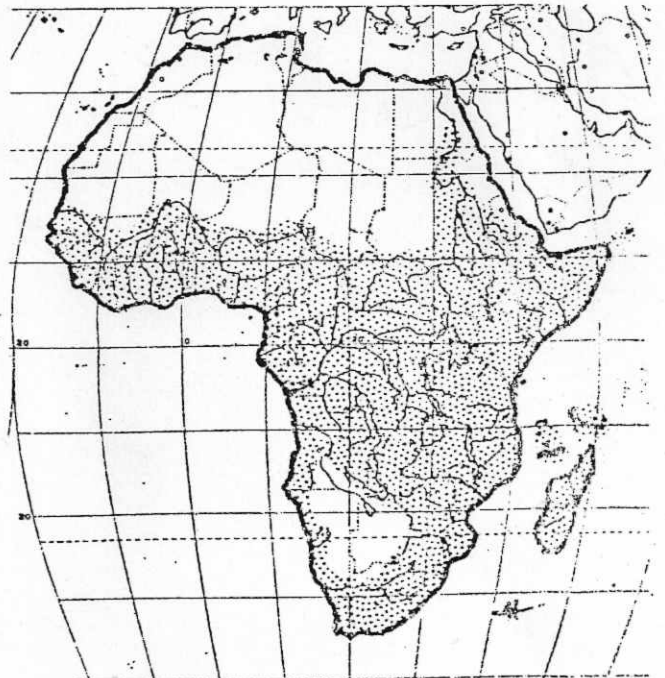
Any door set into the wall will be solid and have no apertures therein. It will be fitted so as to open into the pen and will be fitted with an automatic closing device as well as having a suitable lock or padlock fitting. Any door or gate set on top of the wall in the fence will similarly be fitted with an automatic closing device and suitable lock or padlock fitting. Any steps leading up to the door or gate will be moveable and will be removed when not in use.

The pen will contain shelters or bushes large enough to provide shade for the crocodiles housed therein. It will also have cleared areas large enough for the crocodiles to be able to sun themselves. The area of the pen not taken up by the pond will be of earth or sand.

#### Ponds

The pen will contain a pond so constructed that the water surface is not less than five metres long and two metres in width. Water depth over 50% of the length of such pond shall not be less than one metre in depth.

The pond may be constructed of either concrete or earth but in both cases will be fitted with a drain and overflow drain. In either case the sides of the pond will slope so as to allow the crocodiles easy access to and from the pond.

General distribution of *Crocodylus niloticus*.

" A concrete feeding dais will be constructed at one side of the pond with a channel from the pond leading around it. This dais will be constructed of concrete notwithstanding whether the pond is of concrete or earth construction.

#### Retreats

In pens containing concrete ponds or ponds into which the crocodiles cannot burrow into the walls, special retreats will be constructed.

The retreat will be dug into the floor of the pen in the area where flooding is unlikely and shall be covered with roofing over which at least 20 cms of sand or soil have been placed. The retreat will be large enough to contain all the crocodiles held in the pen and shall be large enough for the largest crocodile to turn around in.

#### Cleaning

The pen shall be cleaned daily of any faeces, dead meat etc. Where the pond is not adequately stocked with fish to keep it clean it will be drained weekly and cleaned out.

#### Handling

No handling of the crocodiles will be allowed for public display. Nor will the crocodiles be prodded or goaded into displaying or reacting for the public in any manner whatsoever. All handling will be restricted as much as possible and should be confined to that necessary for cleaning, reconstruction and the treatment of injury and disease.

#### Feeding

With the exception of fish, no live prey will be introduced into the pen. Feeding will be allowed during public visits but such feeding will not be done by the public.

Department of National Parks and  
Wildlife Management  
P.O. Box 8365  
Causeway, Rhodesia

#### REFERENCES

- BRAZAITIS, P. 1967. Crocodilian pets. OCC PAP N Y ZOOL SOC (unnumbered): 1-5.
- CHAPMAN, C.M. 1970. Survey of the crocodile population of the Blue Nile. GEOGR J 136(1): 55-59.
- COTT, H.B. 1961. Scientific results of an enquiry into the ecology and economic status of the Nile Crocodile in Uganda and Northern Rhodesia. TRANS ZOOL SOC LONDON 29(4): 211-356.
- \_\_\_\_\_. 1968. Nile crocodile faces extinction in Uganda. ORYX 9(2): 330-332.

DOWLING, H.G. 1965. "Our crocodiles like it hot." ANIM KINGDOM 68(3): 74-78.

DOWLING, H.G. & P. BRAZAITIS (1966) "Size and growth in captive crocodiles." INT ZOO YEARB 6: 265-270.

MODHA, M.L. 1968. The ecology of the Nile Crocodile on Central Island, Lake Rudolf. EAST AFR WILDLIFE J 5: 76-95.

\_\_\_\_\_. 1968. Basking behaviour of the Nile Crocodile on Central Island, Lake Rudolf. EAST AFR WILDLIFE J 6: 81-88.

PIENAAR, U. de V. and V.F.M. FITZSIMONS. 1966. The Reptiles of the Kruger National Park. KOEDOE (1): 1-223.

POOLEY, A.C. 1962. The Nile Crocodile *Crocodylus niloticus*. Notes on the incubation period and growth rate of juveniles. LAMMERGEYER 2(1): 1-55.

\_\_\_\_\_. 1966. Crocodiles and crocodile farming. AFR WILDLIFE 20(3): 211-216.

\_\_\_\_\_. 1969. The burrowing behaviour of crocodiles. LAMMERGEYER 10: 60-63.

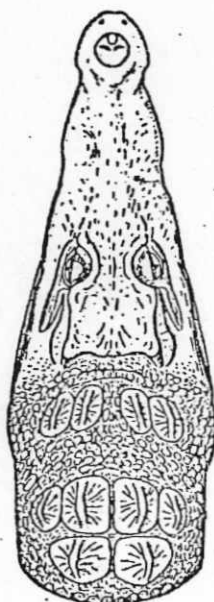
\_\_\_\_\_. 1969. Rearing Crocodiles in Zululand. AFR WILDLIFE 23(4): 314-320.

\_\_\_\_\_. 1970. Conservation of the Crocodile in Zululand. ANIMALS 13(2): 76-79.

RUTLEDGE, J. 1969. Crocodile farm. (Part one) BLACK LECHWE 7(4): 23-25.

\_\_\_\_\_. 1969. Crocodile farm. (Part two) BLACK LECHWE 7(5): 4-7.

VOGEL, Z. 1964. Reptiles and Amphibians, their care and behaviour. Studio Vista, London.



[From Wermuth, 1953.]